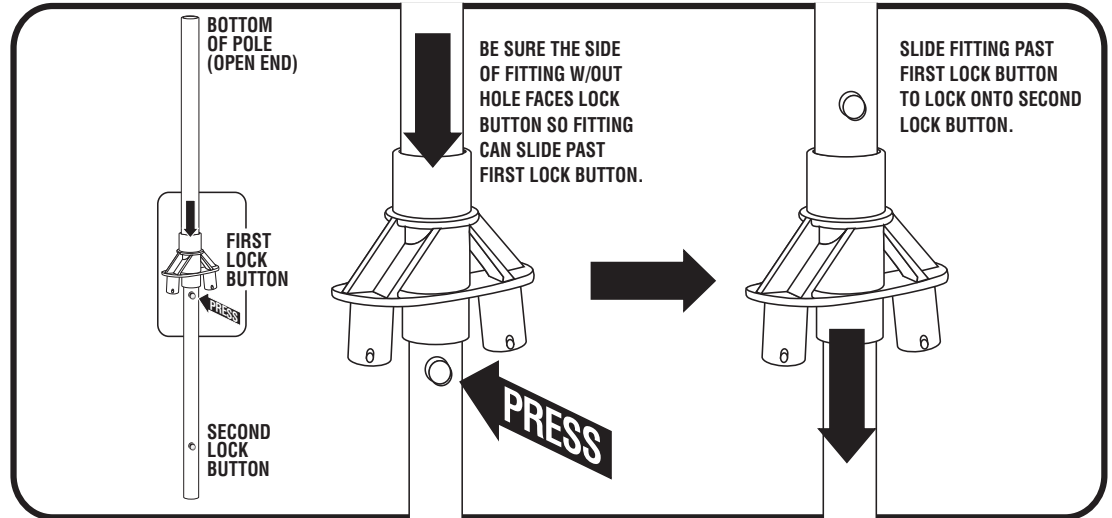




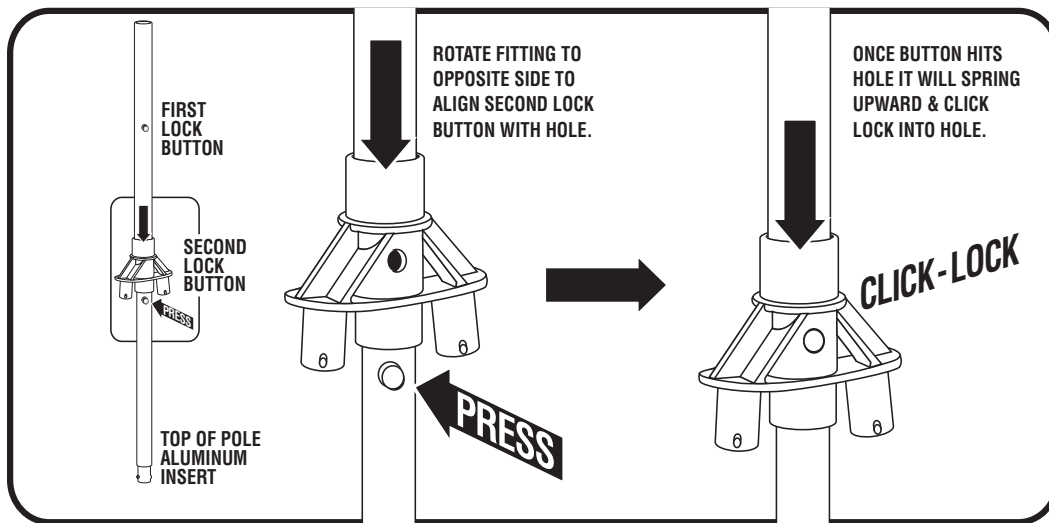
# REUSABLE VINYL BALLOON INSTALLATION GUIDE Item GABB17

When pole not pre-assembled  
follow these 3 easy steps!

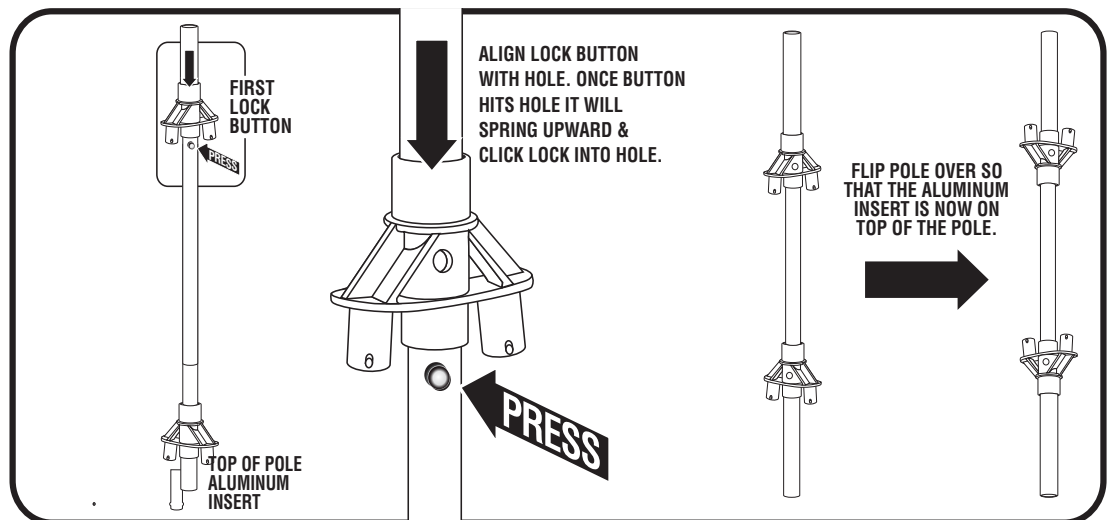
## STEP 1



## STEP 2



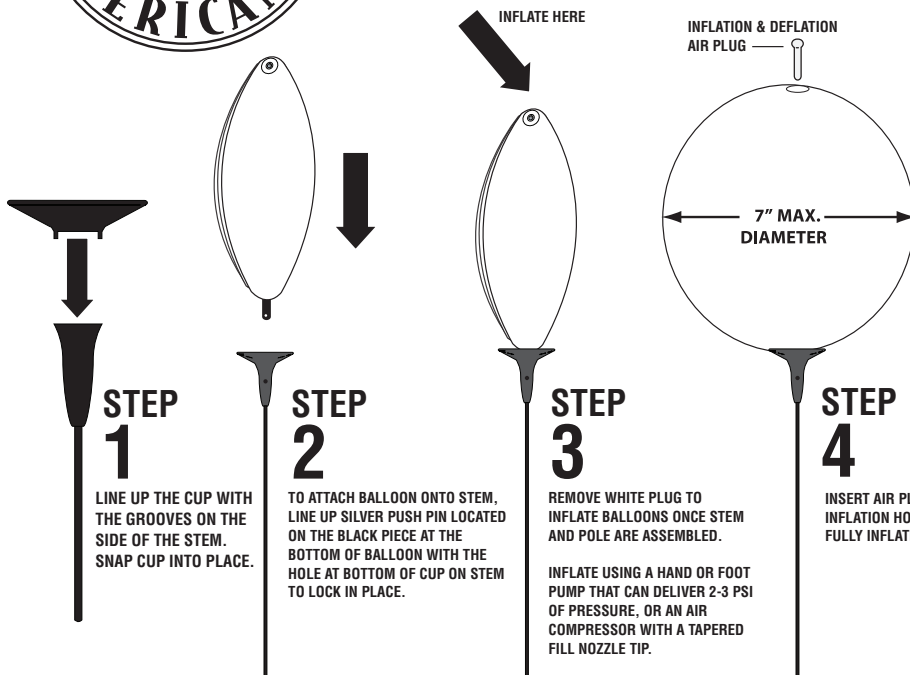
## STEP 3





# REUSABLE VINYL BALLOON INSTALLATION GUIDE Item GABB17

## BALLOON ASSEMBLY



### INFLATION TIPS:

Use a bicycle pump or air compressor to inflate.

**DO NOT OVER INFLATE - BALLOON MAY BURST AND CAUSE INJURY!**

Inflate balloon to point where balloon feels tight.

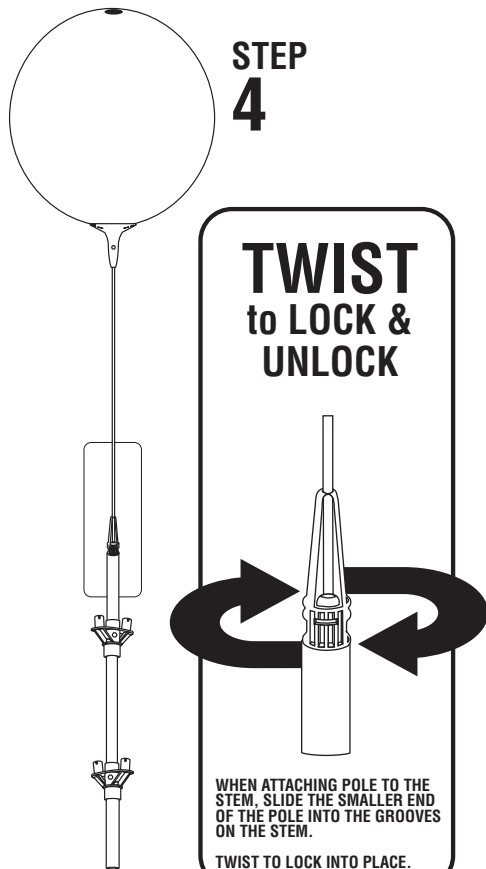
It is easier to inflate balloon at room temperature, (70°-75°F) or higher as balloon material elasticity is increased.

For best results inflate outdoors with an air compressor. A 20° temperature drop can cause slight deflation.

**DO NOT OVER-INFLATE!  
BALLOON MAY BURST  
AND CAUSE INJURY!!!**



**USE EYE PROTECTION  
WHEN INFLATING!!!**



\*REPEAT STEP FOR ALL REMAINING STEM HANDLES AFTER THEY ARE ASSEMBLED ONTO REMAINING PLASTIC FITTINGS.

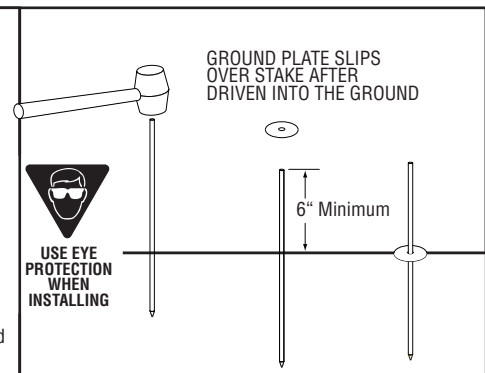
## GROUND STAKE KIT

**STEP 1** BEGIN BY POUNDING GROUND STAKE INTO GROUND ONLY 1-2 INCHES WITH A RUBBER Mallet OR HAMMER BEING SURE TO KEEP STAKE AS VERTICAL AS POSSIBLE. ONCE THE STAKE IS STANDING ON ITS OWN, TAKE A STEP BACK TO MAKE CERTAIN IT IS INDEED STANDING VERTICAL... IF NOT, ADJUST IT BY HAND TO ACHIEVE A VERTICAL STANCE. CONTINUE TO DRIVE STAKE INTO GROUND SO THAT IT IS UNABLE TO MOVE SIDE TO SIDE AND STAYS APPROXIMATELY 6 INCHES ABOVE GROUND SURFACE.

**STEP 2** SLIDE end of pole over protruding ground stake.

PLACE circular 3.5 inch diameter aluminum GROUND PLATE onto protruding GROUND STAKE so that it rests on the ground surface with the stake protruding through the hole in the center.

TIPS:  
- Using a rubber mallet is preferred.  
- Do not drive stake into rocky or hardened soil.  
- Keep clear of any possible underground irrigation lines.



Please contact us if you have any other questions  
[www.gabp.com](http://www.gabp.com) or 1-800-231-0329